

8.0 IMAGES





Plate 1: View east-northeast along Alpine Ranch ROW. No potential within ROW.



Plate 2: View south along Highway 11. No potential within ROW.



Plate 3: View south along Highway 11. ROW is disturbed; no potential. Forest will require Stage 2 test-pit survey.



Plate 4: View east of sloped area with no potential. Does not require Stage 2 AA.





Plate 5: View north along Highway 11. ROW is disturbed; no potential. Forest requires Stage 2 test-pit survey.



Plate 6: View east of hollow. Area has steep slopes with no potential.



Plate 7: View south along Highway 11. ROW is disturbed; no potential. Forest requires Stage 2 test-pit survey.



Plate 8: View north along Highway 11. ROW is disturbed. No potential.



Plate 9: View south along Highway 11. ROW is disturbed. No potential.



Plate 10: View north along Highway 11. ROW is disturbed; no potential. Forest requires Stage 2 test-pit survey.





Plate 11: View east of driveway. Drive way is disturbed; no potential. Forest requires Stage 2 test-pit survey.



Plate 12: View south along Highway 11. ROW is disturbed; no potential. Forest requires Stage 2 test-pit survey.



Plate 13: View north along Highway 11. ROW is disturbed; no potential. Forest requires Stage 2 test-pit survey.



Plate 14: View south along Highway 11. ROW is disturbed; no potential. Forest requires Stage 2 test-pit survey.

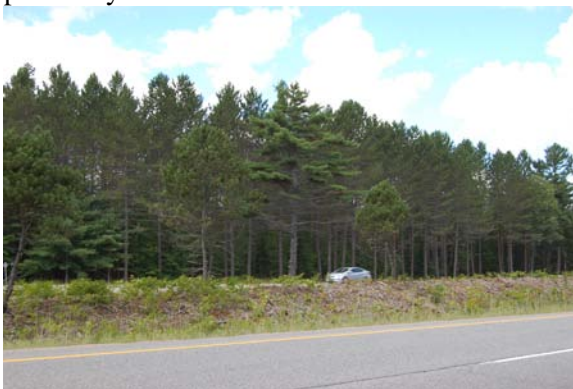


Plate 15: View northwest across Highway 11. ROW is disturbed; no potential. Forest requires Stage 2 test-pit survey.



Plate 16: View south along Highway 11/ ROW is disturbed; no potential. Forest requires Stage 2 test-pit survey.





Plate 17: View southeast of forest east of Highway 11. Forest requires Stage 2 test-pit survey.



Plate 18: View northwest along Highway 11. ROW is disturbed; no potential. Forest requires Stage 2 test-pit survey.



Plate 19: View southeast along Highway 11. ROW is disturbed; no potential. Forest requires Stage 2 test-pit survey.



Plate 20: View east of forest. Forest has potential; requires Stage 2 test-pit survey.



Plate 21: View south-southeast of MNR office and yard. Highway 11 ROW is disturbed; no potential. Lawn has potential; requires Stage 2 test-pit survey. Office complex is disturbed; no potential



Plate 22: View west along High Falls Road. ROW is disturbed; no potential. Forest north of road has potential. Require Stage 2 test-pit survey.





Plate 23: View north-northwest along Highway 11. Row is disturbed; no potential. Bush west of highway requires Stage 2 test-pit survey.



Plate 24: View north-northwest along Highway 11. ROW is disturbed; no potential. Bush east of highway has potential and requires Stage 2 test-pit survey.



Plate 25: View east along Holiday Park Drive. ROW is disturbed; no potential. Forest requires Stage 2 test-pit survey.



Plate 26: View north along Bonnell Road. ROW is disturbed; no potential. Bush requires Stage 2 test-pit survey.



Plate 27: View west of bush area. Area has potential. Requires Stage 2 test-pit survey.

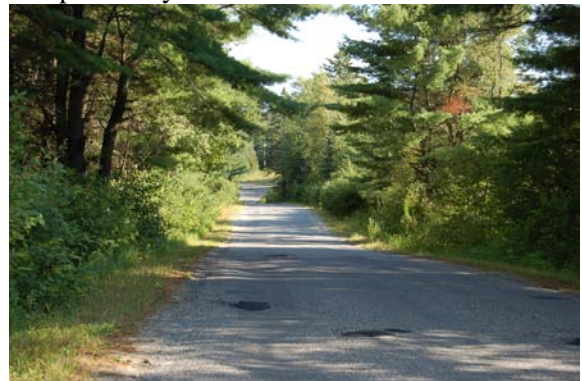


Plate 28: View south along Bonnell Road. ROW is disturbed; no potential. Forest on either side of ROW requires Stage 2 test-pit survey.





Plate 29: View north along Bonnell Road. ROW is disturbed; no potential. Forest on either side of ROW requires Stage 2 test-pit survey.



Plate 30: View southeast along Trans-Canada Pipeline easement. Easement is disturbed; no potential. Forest requires Stage 2 test-pit survey.



Plate 31: View west of forest. Forest has potential. Requires Stage 2 test-pit survey.



Plate 32: View east of lawn. Lawn and forest have potential. Both require Stage 2 test-pit survey.



Plate 33: View northwest along Manitoba Street. ROW is disturbed; no potential.



Plate 34: View west of forest. Forest has potential; requires Stage 2 test-pit survey.





Plate 35: View east of forest. Forest has potential. Requires Stage 2 test-pit survey.



Plate 36: View southeast along Manitoba Street. ROW is disturbed. No potential.



Plate 37: View northwest along South Monck Drive. ROW is disturbed. No potential.



Plate 38: View northeast, of watercourse and marsh. Area is low and wet. No potential.



Plate 39: View southeast along South Monck Drive. Row is disturbed. No potential.



Plate 40: View east, of watercourse and marsh area. Area in foreground is low and wet. No Stage 2 required. Area in background requires Stage 2 test-pit survey.





Plate 41: View southwest along Partridge Lane. ROW is disturbed. No potential.



Plate 42: View southwest of gravel yard. Yard is disturbed. No potential.



Plate 43: View northwest along South Monck Drive. ROW is disturbed. No potential.



Plate 44: View northwest along South Monck Drive. ROW is disturbed; no potential.



Plate 45: View southeast along South Monck Drive. ROW is disturbed. No potential.



Plate 46: View southeast along South Monck Drive. ROW is disturbed. No potential.





Plate 47: View southeast along South Monck Drive. ROW is disturbed. No potential.



Plate 48: View southeast along South Monck Drive. Field beyond ROW requires Stage 2 pedestrian survey.



Plate 49: View east of agricultural field. Potential. Requires Stage 2 pedestrian survey.



Plate 50: View east of golf course driveway. Driveway is disturbed. No potential.



Plate 51: View northwest along South Monck Drive. ROW is disturbed. No potential.



Plate 52: View northwest along South Monck Drive. ROW is disturbed. No potential.





Plate 53: View west, of waterlogged watercourse. Area is low and wet. No Stage 2 required.



Plate 54: View northwest along South Monck Drive. Agricultural field beyond ROW has potential; requires Stage 2 pedestrian survey.



Plate 55: View east along stream course. Area is low and wet. No Stage 2 required.

